



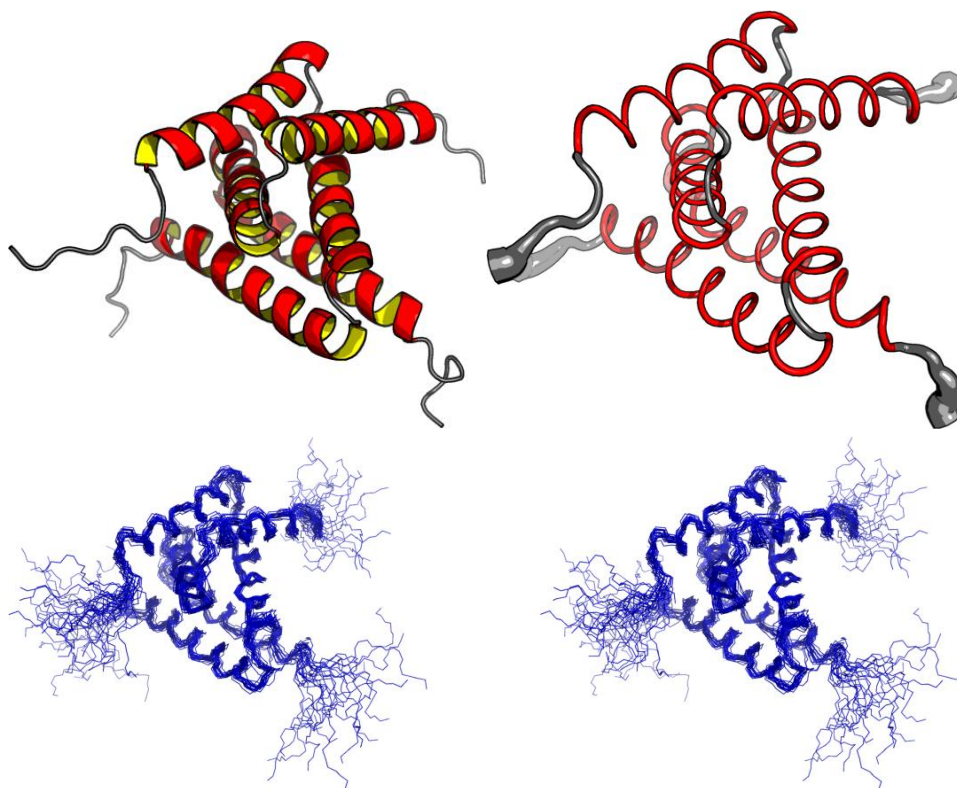
# Structure Quality Analysis for NAME

Analyses performed for user defined residues.

The constraints analysis is based on the following files: NOE distance constraints file. Angular constraints file. H-bond constraints file.

Procheck analysis, RMSD calculation and structure superimposition are based on: User defined residues

NESG ID: NAME  
PDB ID:  
Deposition date:  
Common Name:  
Class:  
Length (a.a.): 160  
Organism:  
SwissProt /  
TrEMBL ID:  
# models: 20  
Oligomerization: dimer  
Molecular  
weight: 17842



## Secondary Structure Elements:

*Inter-chain break(s) between 80 & 91*

alpha helices: 9A-25A, 30A-47A, 51A-73A, 9B-26B, 30B-48B, 51B-73B

beta strands:

Total number of restricting constraints per restrained residue: 24.7

Restricting long range constraints per restrained residue: 5.4

Distance violations per model

Calculated using sum over  $r^{-6}$

0.1 - 0.2 Å   0.2 - 0.5 Å   > 0.5 Å

0            0            0

Dihedral angle violations per model

1 - 10 °   > 10 °



## Structure Quality Analysis for NAME

0.05 0

FIDs deposited in the BMRB? no

RPF Scores

Recall Precision F-measure DP-score

0.836345 0.909448 0.871 0.742972

RMSD *All residues* *Ordered residues*<sup>2</sup> *Selected residues*<sup>3</sup>

*All backbone atoms* 2.6 Å 0.7 Å 0.7 Å

*All heavy atoms* 3.3 Å 1.2 Å 1.2 Å

Ramachandran Plot Summary for selected residues<sup>3</sup> from Procheck

*Most favoured regions* *Additionally allowed regions* *Generously allowed regions* *Disallowed regions*

97.3% 2.6% 0.0% 0.0%

Ramachandran Plot Summary for selected residues<sup>3</sup> from Richardson Lab's Molprobability

*Most favoured regions* *Allowed regions* *Disallowed regions* [View plot](#) [View model summary](#)

99% 1% 0%

### Global quality scores

Program *Verify3D* *ProsaII (-ve)* *Procheck (phi-psi)*<sup>3</sup> *Procheck (all)*<sup>3</sup> *MolProbability Clashscore*

*-Raw score* 0.33 1.02 0.54 0.34 18.81

*Z-score*<sup>1</sup> -2.09 1.53 2.44 2.01 -1.70

**Generalized linear model RMSD prediction: 1.48**

Close Contacts and Deviations from Ideal Geometry (from PDB validation software)

Number of close contacts (within 1.6 Å for H atoms, 2.2 Å for heavy atoms): 47

RMS deviation for bond angles: 0.6 °

RMS deviation for bond lengths: 0.003 Å

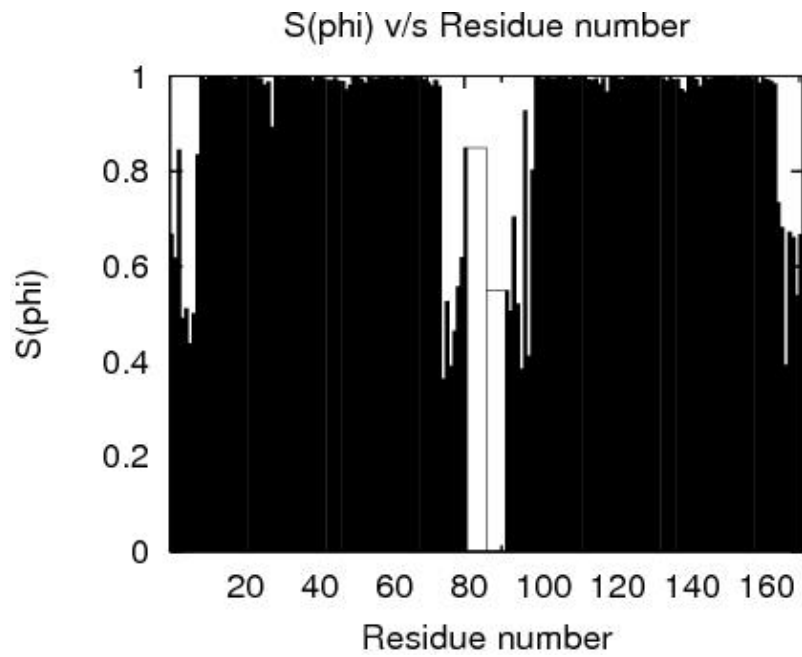
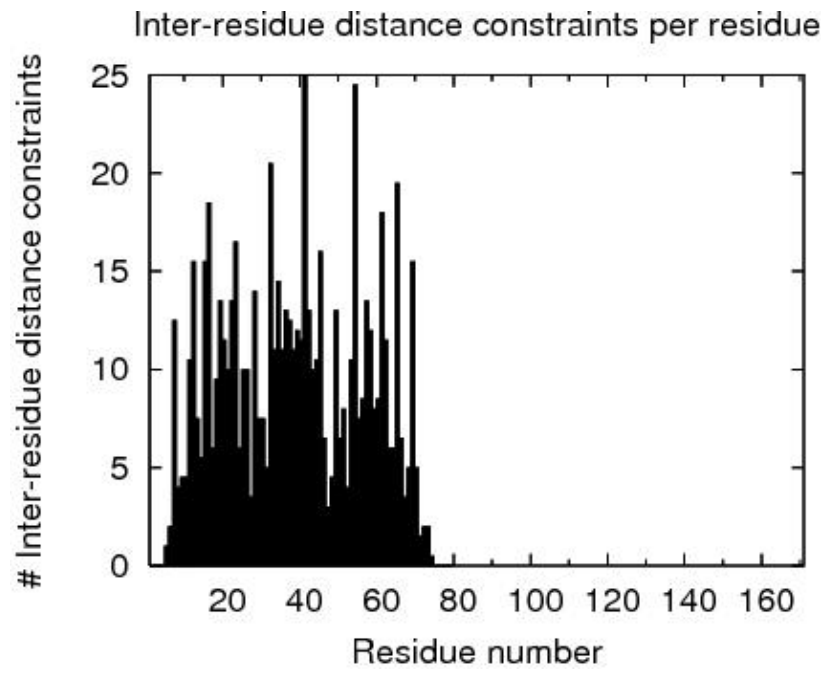
<sup>1</sup> With respect to mean and standard deviation for a set of 252 X-ray structures < 500 residues, of resolution <= 1.80 Å, R-factor <= 0.25 and R-free <= 0.28; a positive value indicates a 'better' score

<sup>2</sup>Order residues: 9A-73A,9B-73B

<sup>3</sup>Selected residues: 9A-73A,9B-73B

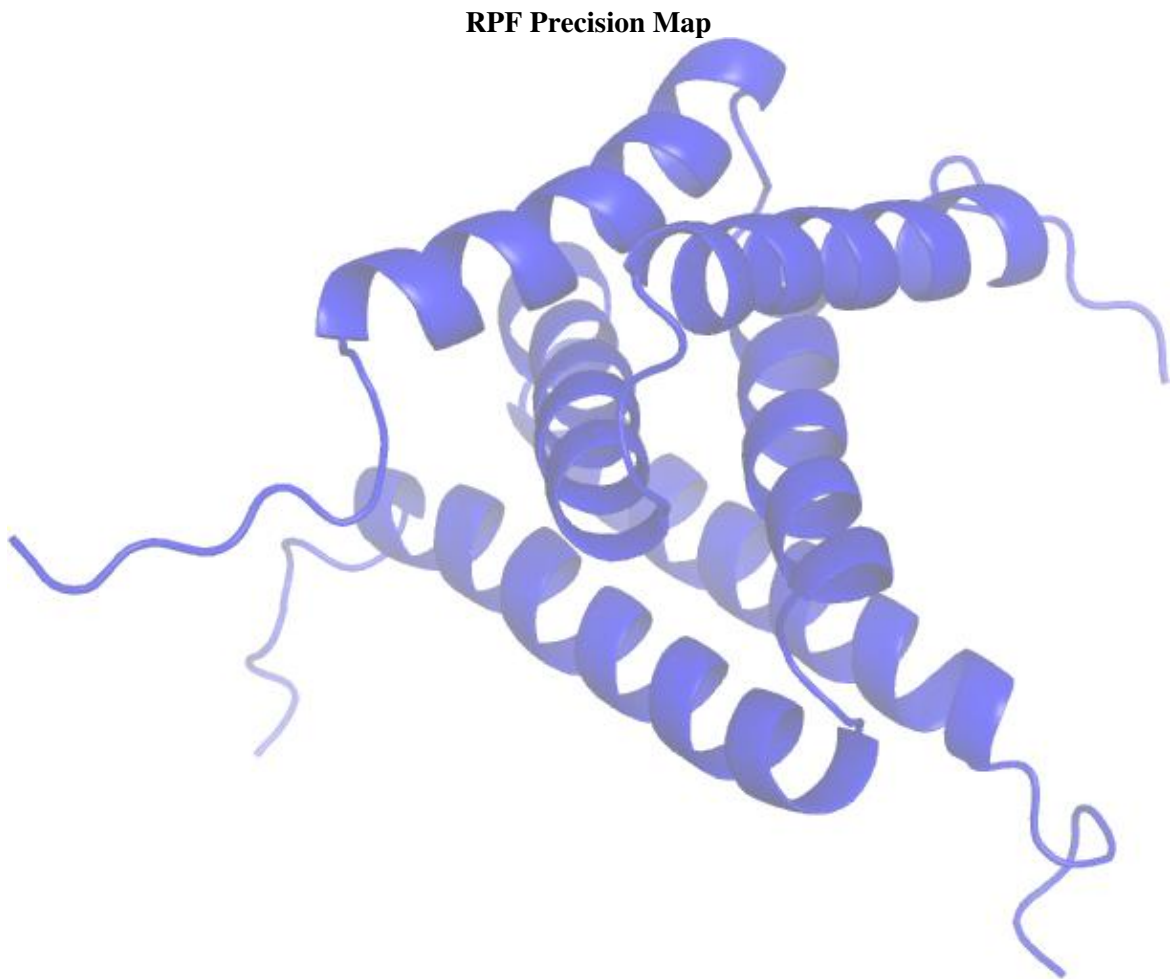
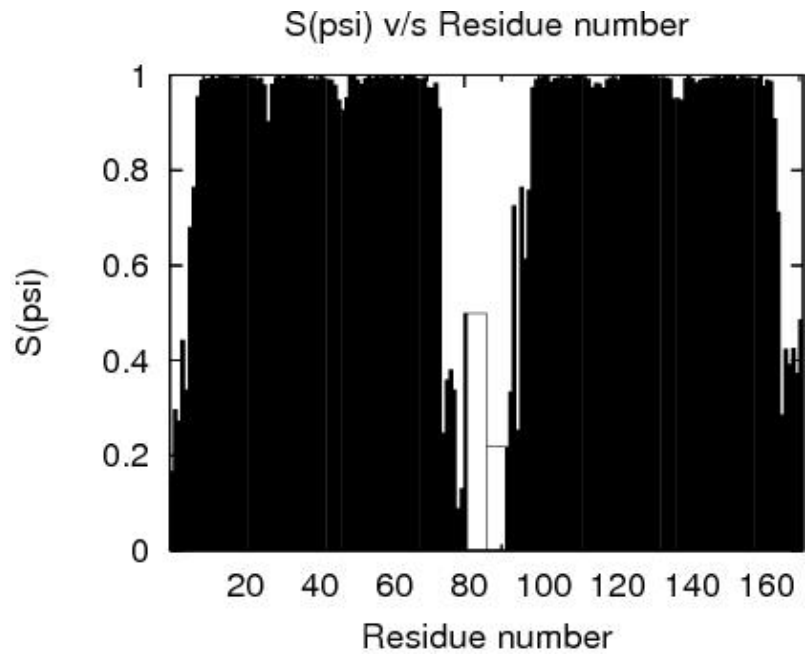


# Structure Quality Analysis for NAME





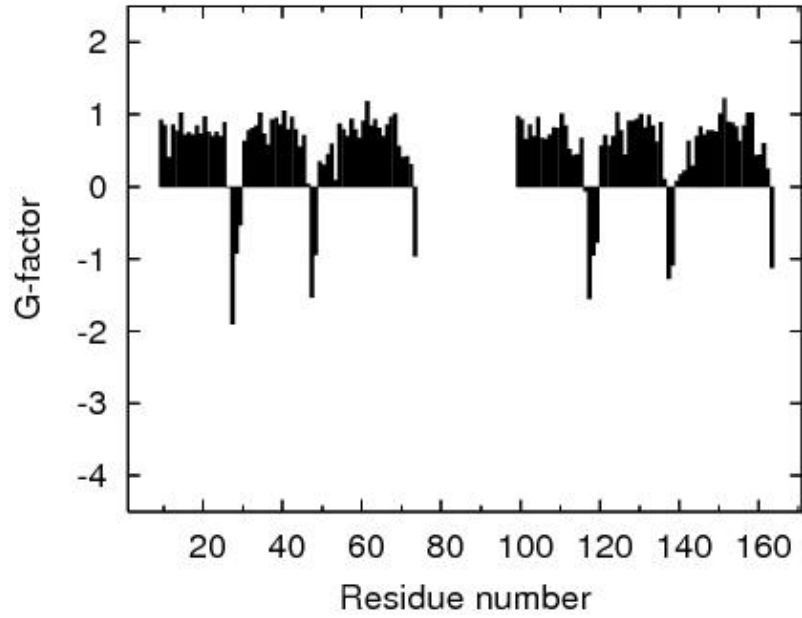
# Structure Quality Analysis for NAME



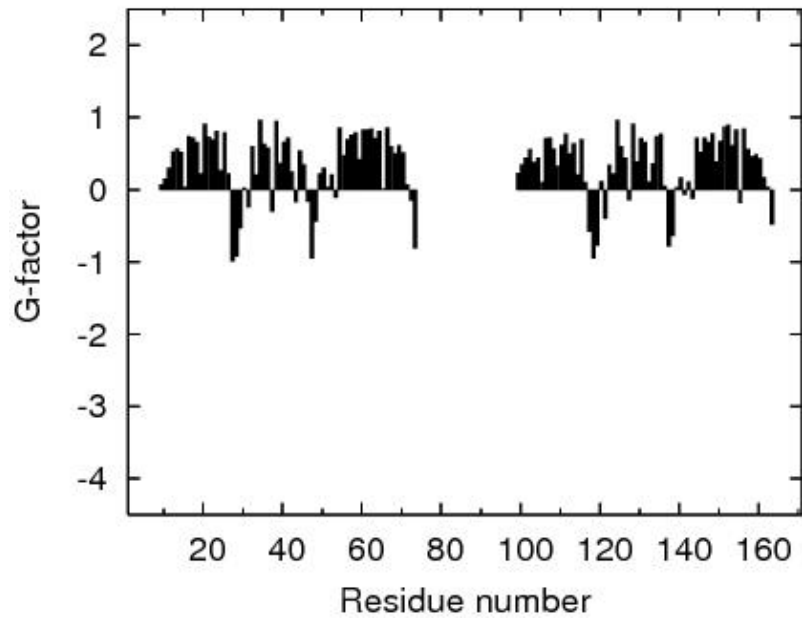


# Structure Quality Analysis for NAME

## Procheck G-factor for phi-psi

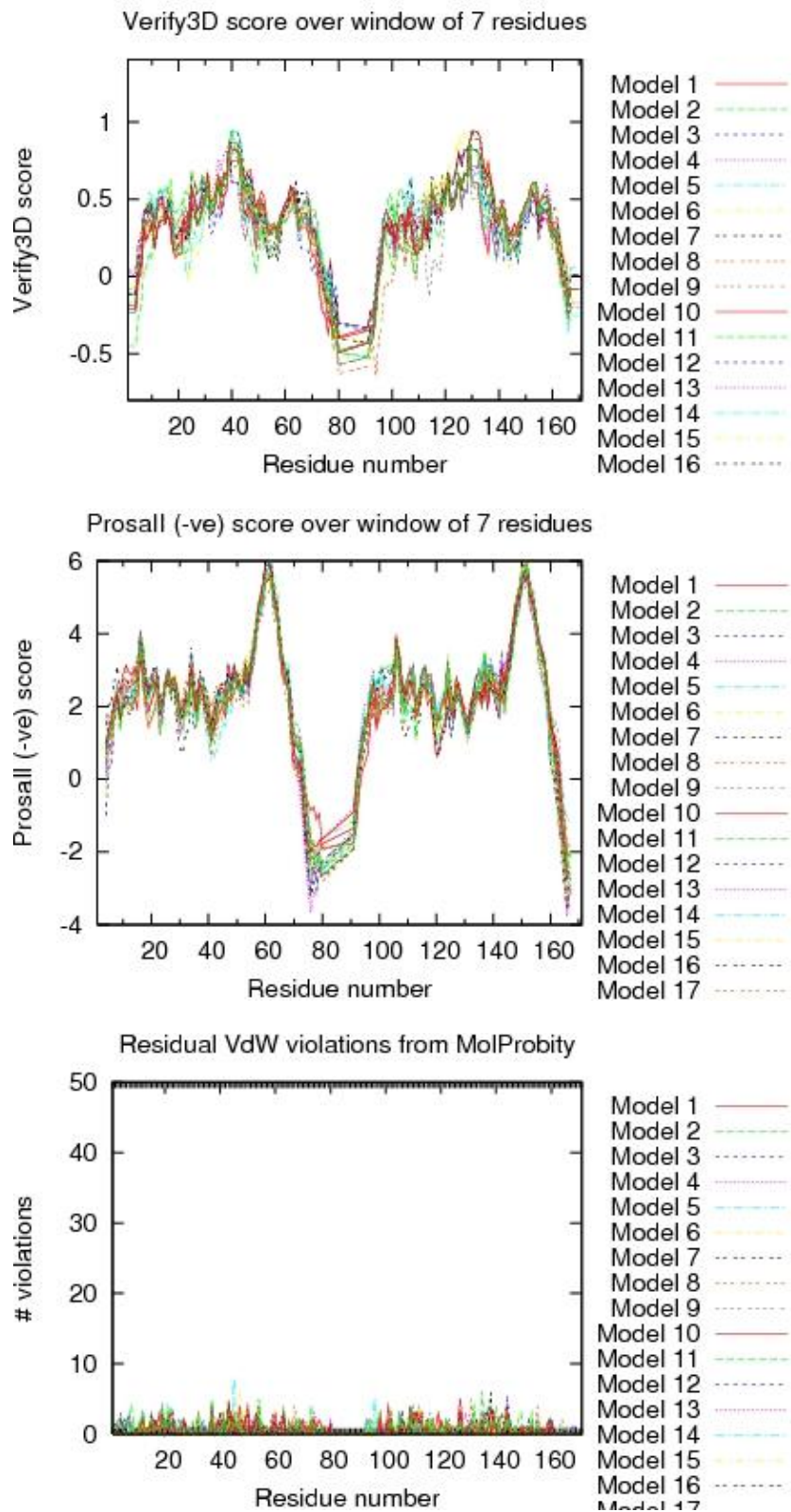


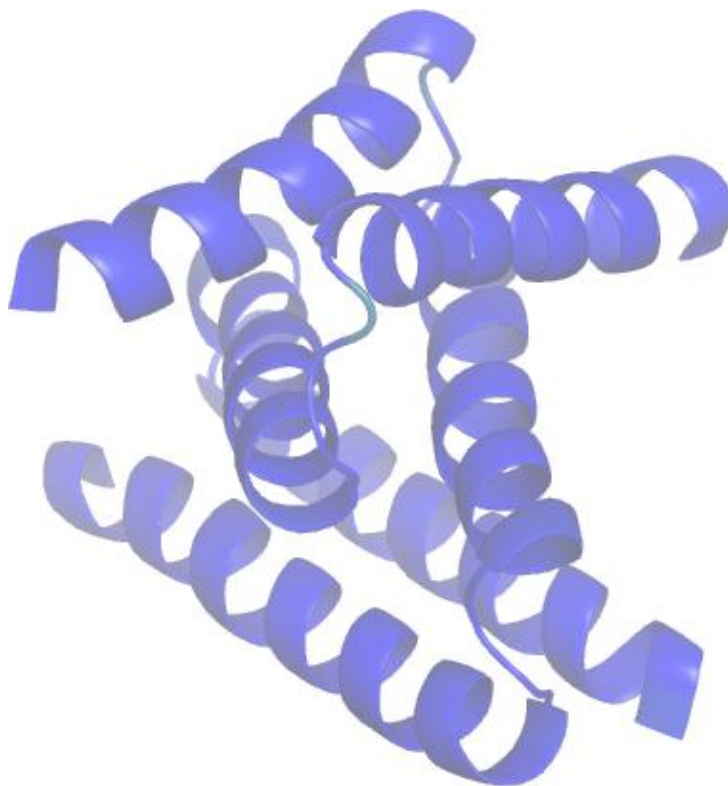
## Procheck G-factor for all dihedral angles





# Structure Quality Analysis for NAME





**Residue Plot of Ramachandran analysis(based on data from Richardson Lab's Molprobit)**

**References:**

1. Luthy R, Bowie J U and Eisenberg D, "Assessment of protein models with three-dimensional profiles", Nature 356 (1992): 83-85
2. Bowie J U, Luthy R and Eisenberg D, "A Method to Identify Protein Sequences that Fold into a Known Three-Dimensional Structure", Science 253 (1991): 164-169
3. Sippl M J, "Recognition of Errors in Three-Dimensional Structures of Proteins", Proteins 17 (1993): 355-362
4. Sippl M J, "Calculation of Conformation Ensembles from Potentials of Mean Force", J Mol Biol 213 (1990): 859-883
5. Laskowski R A et al, "AQUA and PROCHECK\_NMR: Programs for checking the quality of proteins structures solved by NMR", J Biomolec NMR 8 (1996): 477-486
6. Laskowski R A et al "PROCHECK: a program to check the stereochemical quality of protein structures" J Appl Cryst, 26 (1993): 283-291
7. Word J M et al, "Exploring steric constraints on protein mutations using MAGE / PROBE", Prot Sci 9 (2000): 2251-2259
8. Word J M et al, "Asparagine and Glutamine: Using Hydrogen Atom Contacts in the Choice of Side-chain Amide Orientation", J Mol Biol 285 (1999): 1735-1747
9. Word J M et al, "Visualizing and Quantifying Molecular Goodness-of-Fit: Small-probe Contact Dots with Explicit Hydrogens", J Mol Biol 285 (1999): 1711-1733
10. Tejero R and Montelione G T, "PDBStat", unpublished
11. Luthy R, McLachlan A D and Eisenberg D, "Secondary Structure-Based Profiles: Use of Structure-Conserving Scoring Tables in Searching Protein Sequence Databases for Structural Similarities",



Proteins 10 (1991): 229-239

12. Richardson D C, Richardson J S, "The kinemage: a tool for scientific communication", Prot Sci 1(1) (1992): 3-9

13. Koradi, R, et al, "MOLMOL: a program for display and analysis of macromolecular structures ", J Mol Graphics 14 (1996): 51-55.

14. Güntert, P, Mumenthaler, C & Wüthrich, K "Torsion angle dynamics for NMR structure calculation with the new program DYANA", J. Mol. Biol 273 (1997): 283-298

15. Lovell S C et al, "Structure validation by Calpha geometry: phi,psi and Cbeta deviation" Proteins (2003) 50: 437-450

16. Kabsch W, Sander C, "Dictionary of protein secondary structure: pattern recognition of hydrogen-bonded and geometrical features", Biopolymers (1983) 22: 2577-2637

17. Bagaria, A., Jaravine, V., Huang, Y.J., Montelione, G.T., and Guntert, P. "Protein structure validation by generalized linear model root-mean-square deviation prediction". Protein Sci 21(2012), 229-238.

Analysed by on May-10-2013 using PSVS 1.3



## Software Environment

### Software for structure quality evaluation:

DSSP	DsspCMBI-April-2000
pdbstat	PdbStat-5.4 Version
AutoAssign	Version 2.4.0 (uses only AVS scripts)
RPF analysis	ASDP-1.0
PDB validation	Version 8.061
Verify3D	Version 1.0 corrected by Aneerban
ProsaII	Prosa2003
PROCHECK	Version 3.5.4
MolMol	Version 2K.2

### MolProbity programs:

cluster	1999
clashlistcluster	1999 (corrected by Aneerban)
mage	Version 6.35.040409
prekin	Version 6.35.040406
reduce	Version 2.14
probe	Version 2.6



## Other Software:

PERL	Version 5.8.0
convert	ImageMagick 5.5.6
ps2pdf	Ghostscript 7.05
htmldoc	v1.9
gnuplot	Version 3.7 patchlevel 3
jpegtopnm	year 2000
pnmcrop	year 2000
pnmtojpeg	year 2000